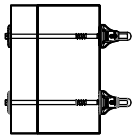
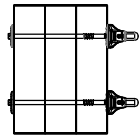


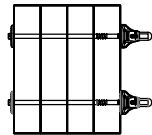
**6-1/4"
ThruLOK**



2x to 4x

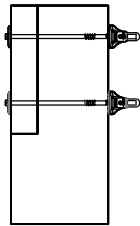


3 ply EW

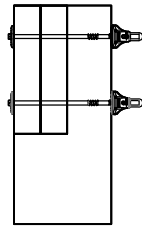


4 ply 2x

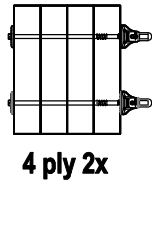
**7"
ThruLOK**



Notched 6x

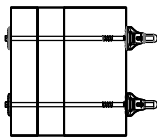


Notched 6x

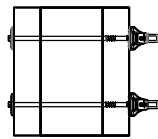


4 ply 2x

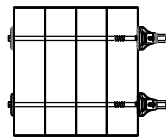
**8"
ThruLOK**



Dbl 2x to 4x

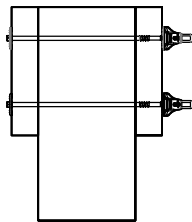


2x to 4x to 2x



4 ply EW

**9-1/2"
ThruLOK**



2x to 6x to 2x

DESIGNER NOTES

Select the proper ThruLOK Fastener length based on the drawings and charts below and maintain minimum fastener spacing to achieve allowable loads in evaluation report ESR-1078.

COMPLIANT TO CODES

IRC, IBC, LABC, LARC, FBC, FRC

SUPPORTING TECHNICAL REPORTS

ICC-ES Evaluation Report ESR-1078
(<https://icc-es.org/report-listing/esr-1078/>)

DRJ Technical Evaluation Report TER 1308-11
(<https://www.drjcertification.org/company/fastenmaster/>)

| PART NUMBER | PART LENGTH | APPLICATION THICKNESS | |
|-------------|-------------|-----------------------|--------|
| | | MIN | MAX |
| FMTHR614 | 6-1/4" | 4-1/2" | 5-1/4" |
| FMTHR007 | 7" | 5-1/4" | 6" |
| FMTHR008 | 8" | 6-1/4" | 7" |
| FMTHR912 | 9-1/2" | 7-3/4" | 8-1/2" |

MINIMUM FASTENER SPACING

| | Beam | | Column | |
|-------------------|------------|--------|------------|----|
| | | | | |
| Edge | Top | 2" | Right/Left | 1" |
| | Bottom | 1" | | |
| End | R / L | 1" | Top | 2" |
| Between Fasteners | Horizontal | 2-1/2" | | |
| | Vertical | 1-3/4" | | |

ThruLOK SIZE SELECTION GUIDE

**DETAIL #
FM - THLK05**

**REV. DATE
10/28/2021**

FastenMaster Framing Details

