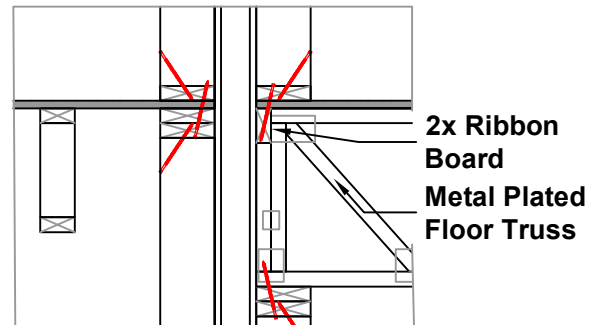


ALLOWABLE LOADS BY CONNECTION NUMBER (C#), LOAD TYPE AND SPECIES				
C#	LOAD TYPE	WOOD SPECIES		
		SPF/HF	D. FIR	S. PINE
1	UPLIFT	780	990	950
	LATERAL	330	300	285
	LAT+B*	500	620	650
2	UPLIFT	340	560	665
3	UPLIFT	210	245	325
	LATERAL	340	265	395
4	UPLIFT	475	590	595
	LATERAL	495	595	650

* LAT+B refers to F1 Lateral where blocking is installed between truss ends (see TER 1503-03)



CONTINUOUS LOAD PATH DETAIL - PARTY WALL

DESIGNER NOTES

All connections made using 6" FrameFAST Screws (FMFF006) and installed with FramFAST Tool to ensure proper alignment and offset. Where different species being connected, use the value corresponding to the lower density wood.

COMPLIANT TO CODES

IRC, IBC, LABC, LARC, FBC, FRC

SUPPORTING TECHNICAL REPORTS

IAMPO Evaluation Report ER-719 (<https://www.iapmoes.org/building-products-evaluation-report-program/evaluation-report-directory/>)

DRJ Technical Evaluation Reports TER 1503-03, TER 1608-02 and TER 1801-02 (<https://www.drjcertification.org/company/fastenmaster>)